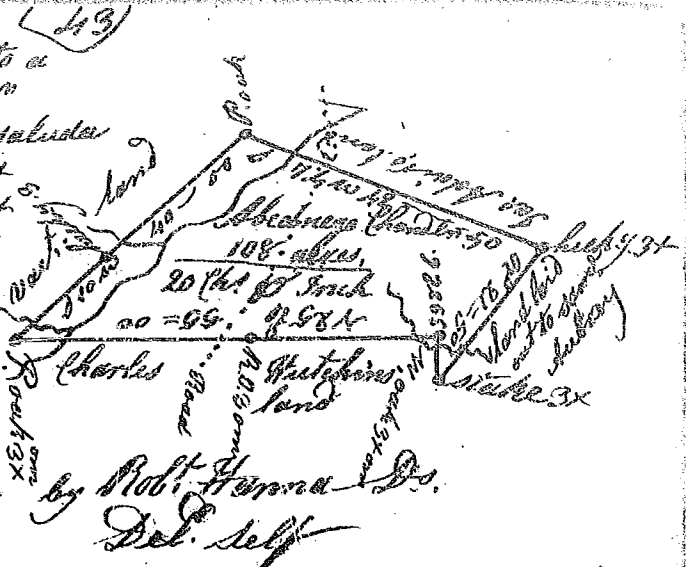
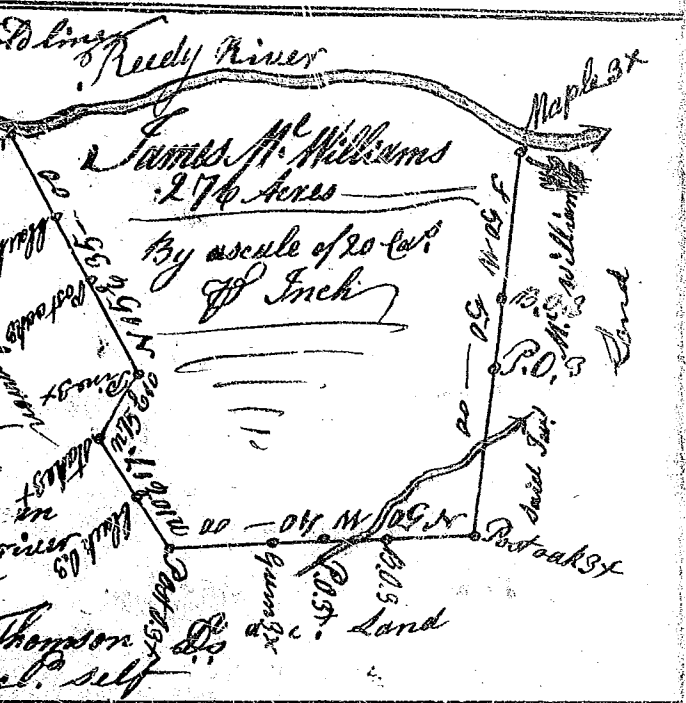


State of S<sup>c</sup> Carolina Pursuant to a  
 warrant from John Thomas Esq.  
 Commissioner of Locations & of Saluda  
 I have admeasured and laid out  
 unto Abner's Chancellor tract  
 of one hundred & eight acres of  
 land on a small branch of Dun-  
 -cans Creek in Laurens County  
 having such shape, Marks,  
 Bittings & Soundings as the  
 above Plat Represents.  
 Survey: 10<sup>th</sup> Aug<sup>r</sup> 1786  
 Recorded 15<sup>th</sup> Aug<sup>r</sup> 1786



State of S<sup>c</sup> Carolina District of Woodbury  
 Pursuant to a warrant from  
 John Thomas Esq. Com<sup>r</sup> of  
 Locations Dated 1<sup>st</sup> May 1786  
 I have admeasured and  
 laid out unto James McWill-  
 -iams tract of land of two  
 hundred and seventy six acres  
 in Greenville County, on the  
 south side of Needy river,  
 bounded S. & E. by said James  
 McWilliams land, W. by Duin in  
 Commers's land, N. by Needy river  
 all other sides vacant land,  
 Survey: 18<sup>th</sup> May 1786 And<sup>r</sup> Thomson Esq.  
 Recorded 18<sup>th</sup> Aug<sup>r</sup> 1786 Del. self



State of South Carolina... Pursuant  
 to a warrant from John Thomas Esq.  
 Com<sup>r</sup> of Locations. Dated the 29<sup>th</sup>  
 May 1786. I have admeasured  
 & laid out unto Benjamin Barton  
 a tract of sixty five acres of  
 land, situate in the County of  
 the Red Boundary on both sides of  
 Bartons fork of the Tiger River. Having  
 such shape, marks, Bittings & soundings  
 as the above plat Represents  
 Surveyed the 29<sup>th</sup> May 1786  
 Recorded 29<sup>th</sup> Aug<sup>r</sup> 1786  
 Del. self

